

SSB400 SANDBLASTING CABINET

OWNER'S MANUAL



FOR YOUR SAFETY
PLEASE READ THESE INSTRUCTIONS CAREFULLY
AND RETAIN THEM FOR FUTURE USE.



SPECIFICATION

MODEL No	SSB400
MAX WORK PRESSURE	125 PSI / 8.6 BAR
WEIGHT	160kg
LENGTH WIDTH HEIGHT	1240mm 1330mm 1770mm
MOTOR	220V, 60Hz, 1100W
AIR CONSUMPTION	680L/min
AIR REQUIREMENT	24 CFM @ 125PSI

WARNING



Read and understand instructions before use.



Always wear eye/face and hand protection.

WARNING



Do not use any silica based abrasives with this cabinet. Silica based abrasives have been linked to severe respiratory disease. Always use recommended abrasives. Abrasives used in this unit may be covered by COSHH.

- All hoses should be rated at least 125 PSI.
- Supplied air should be dry and clean from oil and other contaminants.
- Before operating the cabinet check seals on the doors, and make sure dust collection system is running.
- This tank is NOT suitable for paint thinners, gun wash, or air drying.
- DO NOT operate the cleaning tank when you are tired, under the influence of alcohol, drugs, or intoxication.
- When not in use switch the cleaning tank off and remove plug from power supply.
- DO NOT operate the cleaning tank if any parts are missing or damaged. Use original parts and do not substitute or modify original supplied items.

ELECTRICAL CONNECTIONS



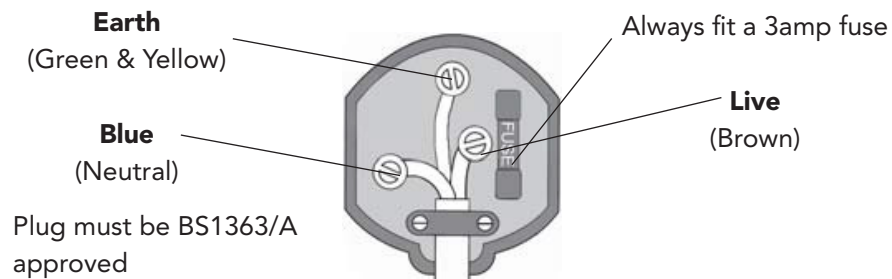
WARNING! READ THESE ELECTRICAL SAFETY INSTRUCTIONS THOROUGHLY BEFORE CONNECTING THE PRODUCT TO THE MAINS SUPPLY.

Before switching the product on, make sure that the voltage of your electricity supply is the same as that indicated on the rating plate. This product is designed to operate on 230VAC 50Hz. Connecting it to any other power source may cause damage.

This product may be fitted with a non-rewireable plug. If it is necessary to change the fuse in the plug, the fuse cover must be refitted. If the fuse cover becomes lost or damaged, the plug must not be used until a suitable replacement is obtained.

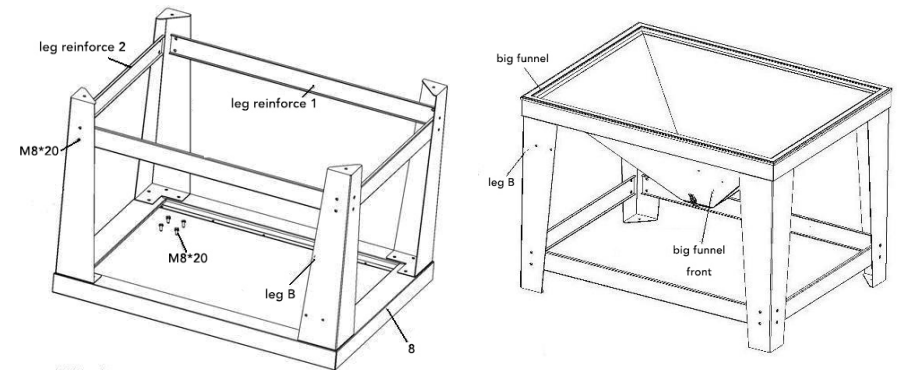
If the plug has to be changed because it is not suitable for your socket, or due to damage, it should be cut off and a replacement fitted, following the wiring instructions shown below. The old plug must be disposed of safely, as insertion into a mains socket could cause an electrical hazard.

We strongly recommend that this machine is connected to the mains supply via a Residual Current Device (RCD). If in doubt, consult a qualified electrician. **DO NOT** attempt repairs yourself.



ASSEMBLY

1. Upend the base and use M8x20 hex bolts to attach leg A and leg B, then mount on the bracket.
2. Use M8x20 hex bolt and spring washers to attach the leg reinforcement bars.



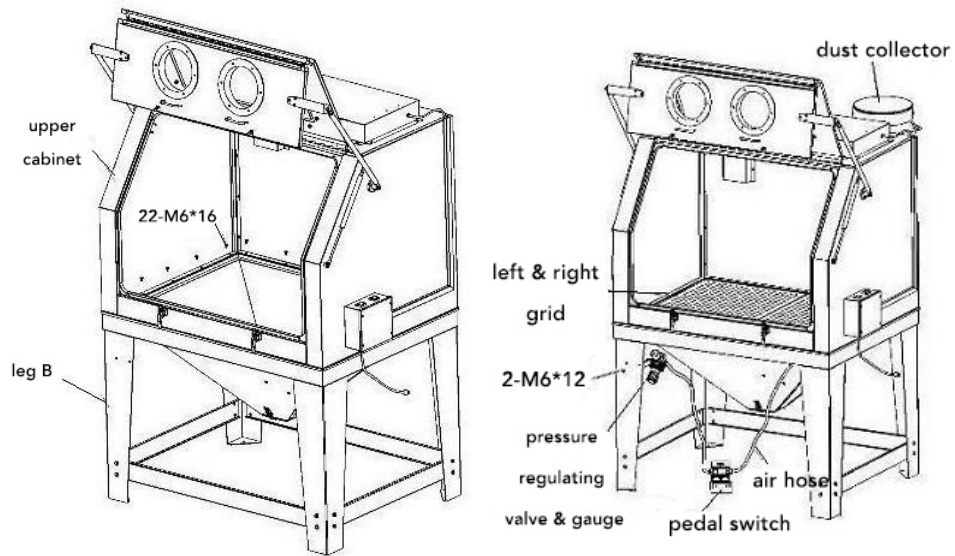
3. Place the assembled parts upright, then put the funnel in the centre. Please note: The front of the funnel should be facing leg B.
4. Place the upper cabinet on the assembled stand. The front of upper cabinet should be facing leg B.
5. Open the double folded door and attach the upper cabinet, big funnel & bracket together with 22pcs M6x16 round head screws and faced washers.
6. Use 4pcs M6x12 bolts & M6 flange nuts to mount the dust collector at the backboard of the upper cabinet. Plug the dust collector plug into the switch box through the slot on the right of the upper cabinet.

ASSEMBLY

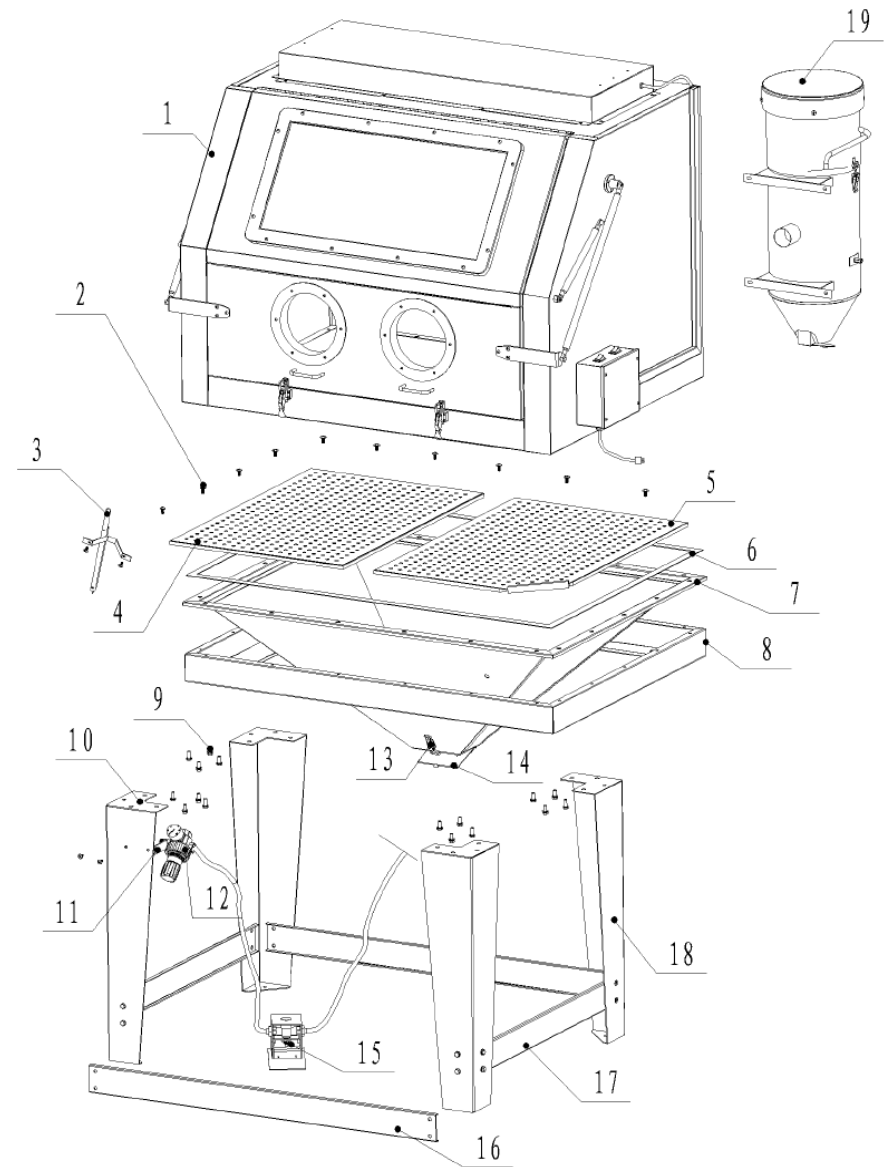
7. Mount pressure regulating valve on the leg B, and connect the orange air hose to the side hole of funnel, then connect it to the sandblast gun.

8. Place the left / right grid in the upper cabinet.

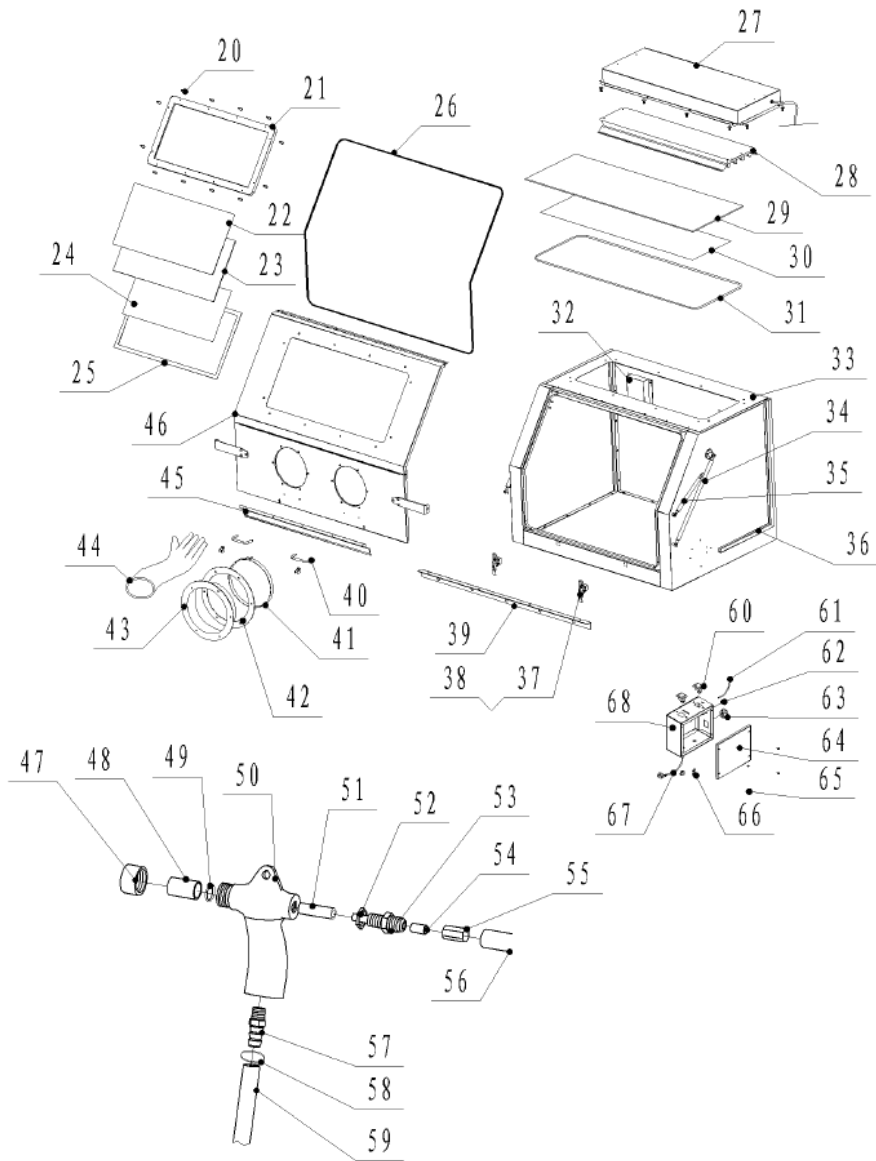
9. Move the sandblaster to its final position by forklift, then remove the reinforcing front leg.



PARTS DIAGRAM



PARTS DIAGRAM



PARTS LIST

No	Description	Part No	No	Description	Part No
1	Upper cabinet	903848	35	Support pole of air springs	903882
2	Round head cross screws	903849	36	Plastic slot board of wire	903883
3	Suction sand hose	903850	37	Front door latch	903884
4	Left grid	903851	38	Latch seats	903885
5	Right grid	903852	39	Rack board	903886
6	Sealing tape	903853	40	Grips	903887
7	Big funnel	903854	41	Elements of big hoops	903888
8	Bracket	903855	42	Mounting ring of gloves	903889
9	M8x20 Bolt	900393	43	Glove seats	903890
10	Leg B	903857	44	Gloves	903891
11	Permanent seat of pneumatic device	903858	45	Sand board	903892
12	Pressure gauge	903859	46	Front opening door	903893
12	Pressure regulating valve	903860	47	Cap of nozzle	903894
13	Assembled latches	903861	48	Nozzle	903895
14	Welded cover board for falling sand	903862	49	"O" seal ring	903896
15	Pneumatic device of foot pedal	903863	50	Gun body	903897
16	Leg reinforces 1	903864	51	Sheath of air jet pipe	903898
17	Leg reinforces 2	903865	52	Lock nut	903899
18	Legs A	903866	53	Air jet pipe	903900
19	Dust collector	903867	54	Straight-pass connector	903901
20	M6x32 round head screws	903856	55	Conversion connector	903902
21	Bracket of viewing window	903868	56	Air hose	903903
22	Glass board of viewing window	903869	57	Quick fitting	903904
23	Glass of viewing window	903870	58	Clamps	903905
24	PE film of viewing window	903871	59	1/2" Sand hose	903906
25	Sealing tape of viewing window	903872	60	Switches	903907
26	Rubber seal strip of front opening doorframe	903873	61	Power cord of daylight lamp	903908
27	Bracket of top light	903874	62	wire clips	903909
28	Seat of fluorecent lamp/ lamps 4pcs	903875	63	Socket	903910
29	Glass of light window	903876	64	Cover of E-box	903911
30	PE film of light window	903877	65	Self tapping screws	903912
31	Rubber seal strip of light window	903878	66	Fuse seat	903913
32	sand boards	903879	67	Power cord	903914
33	Main body of upper cabinet	903880	68	Body of E-box	903915
34	Main support poles	903881			

OPERATING AND MAINTAINING

1. All parts processed must be free of oil, grease and moisture. Make sure parts are dry before putting into the cabinet for cleaning.

2. Set air pressure to 80 psi. For light gauge steel, aluminum, and other more delicate parts, start at lower pressure and gradually increase the pressure until the desired finish is achieved.

Warning: Do not connect to high pressure bottled gas.

3. Direct gun at parts at 45-60 degree angle with ricochet towards the back of the cabinet. Hold gun approximately 6 inches from parts being blasted.

Warning: Gun must always be pointed away from the operator and towards items being processed. Never blast with any of the cabinet doors open.

4. Media should be of good quality and dry. Moisture will cause the media not to flow and will clog the metering valve and hopper.

5. After 10-12 hours of blasting time, the nozzle should be checked. If it shows uneven wear it should be turned 1/4 turn every 10 hours of use.

6. Replace nozzle if it's measured 1/16 over its original size or if it shows uneven wear. Adjust as needed for different media and conditions. A properly working gun will pull 15-17 inches of mercury on manometer.

7. Clean dust from dust collector and clean filter as needed.

8. Air line should be more than 8mm (0.3"). All hoses should be rated for 125 psi (8.6 bar). An isolation valve should be installed.

9. Electric extension cords should be three wire grounded (wire size can not be smaller than 3x1.5mm²).

10. Before starting inspect fittings and hoses for damage and water.

FOR YOUR SAFETY
PLEASE READ THESE INSTRUCTIONS CAREFULLY
AND RETAIN THEM FOR FUTURE USE.



SGS Engineering (UK) Ltd
West Side Park
Raynesway
Derby, DE21 7AZ

EC Declaration of Conformity

This is an important document and should be retained

MANUFACTURER'S NAME: SGS Engineering (UK) Ltd

TYPE OF EQUIPMENT: SHOT BLASTER CABINET

PART NUMBER: SSB400

APPLICATION OF EC COUNCIL DIRECTIVES / STANDARD:

2014/35/EU Low Voltage Directive
2014/30/EU EMC Directive
2012/19/EU WEEE Directive
2011/65/EU RoHS Directive

I, the undersigned, hereby declare that the equipment specified above conforms to the above European Communities Directive(s) and Standard(s).

PLACE: Derby, UK

DATE: 24th NOV 2018

A handwritten signature in black ink, appearing to read 'Robert Wyatt', is written over a horizontal line.

(Signature)
Robert Wyatt
Company Secretary